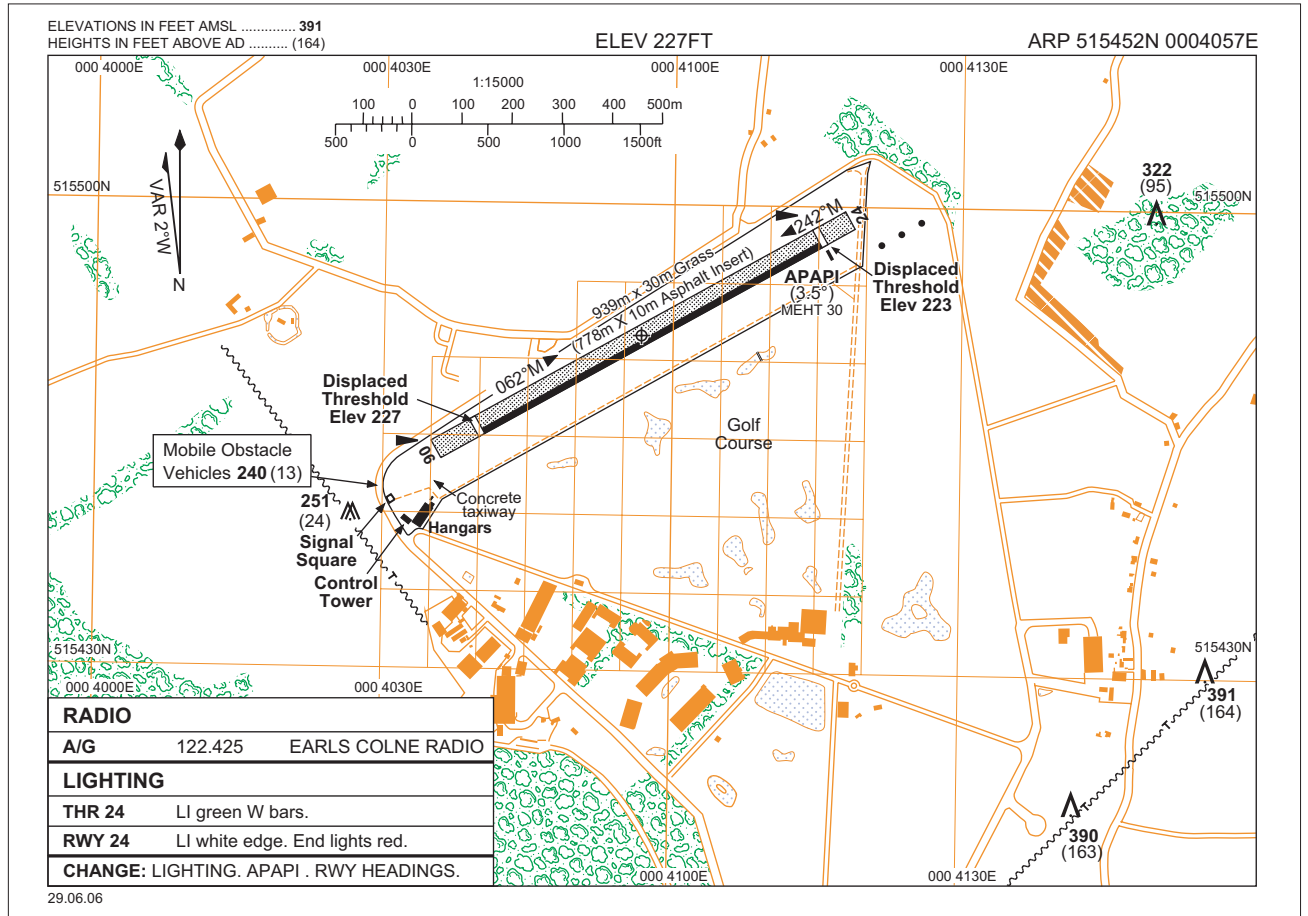


**EGSR AD 2.1** **EGSR** **EARLS COLNE**



**EGSR AD 2.2 – AERODROME GEOGRAPHICAL AND ADMINISTRATIVE DATA**

<b>2</b>	<b>Direction and distance from city:</b>	3 nm SE of Halstead.
<b>4</b>	<b>Geoid undulation at AD ELEV PSN:</b>	
<b>5</b>	<b>Magnetic Variation/Annual Change:</b>	W2.0° (2006) – 0.14° decreasing.
<b>6</b>	<b>AD Administration:</b>	Bulldog Aviation Ltd.
	<b>Address:</b>	Earls Colne Airfield, Earls Colne, Colchester, Essex, CO6 2NS.
	<b>Telephone:</b>	01787-223943.
	<b>Fax:</b>	01787-223943.
<b>7</b>	<b>Type of Traffic Permitted (IFR/VFR):</b>	

**EGSR AD 2.3 – OPERATIONAL HOURS**

<b>1</b>	<b>AD:</b>	<b>Winter:</b> 0900-SS. <b>Summer:</b> 0900-1800.
<b>2</b>	<b>Customs and Immigration:</b>	By arrangement.
<b>7</b>	<b>ATS:</b>	<b>Winter:</b> 0900-SS. <b>Summer:</b> 0800-1700.
<b>8</b>	<b>Fuelling:</b>	By arrangement.
<b>12</b>	<b>Remarks:</b>	This aerodrome is <b>PPR</b> .

**EGSR AD 2.4 – HANDLING SERVICES AND FACILITIES**

<b>2</b>	<b>Fuel/oil types:</b>	Fuel: AVGAS 100LL, 80/87. Oil: W80, 100, 80.
<b>3</b>	<b>Fuelling facilities/capacity:</b>	

## EGSR AD 2.6 – RESCUE AND FIRE FIGHTING SERVICES

1	AD Category for fire fighting:	RFF Category Special.
3	Capability for removal of disabled aircraft:	

## EGSR AD 2.10 – AERODROME OBSTACLES

In Approach/Take-off areas				In circling area and at aerodrome			
1				2			
Runway/Area affected	Obstacle type Elevation Markings/lighting	Co-ordinates		Obstacle type Elevation Markings/lighting	Co-ordinates		
a	b		c	a	b		
		ft amsl			ft amsl		
06/Approach 24/Take-off	Vehicles on road	240	(† 1040 RCL)	Power lines	251	(270°T, 0.2 nm running NW/SE) from ARP	
				Pylon	408	*515412.21N 0004127.86E	
				Pylon	390	*515420.76N 0004141.93E	
				Pylon	391	*515429.31N 0004155.84E	
				Pylon	381	*515437.46N 0004209.26E	
				Trees (Richard's Grove)	322	*515458.73N 0004150.85E	
3	Remarks:	Control Tower 24 ft aal. Hangar 25 ft aal. † Distance (m) beyond start of TORA.					

## EGSR AD 2.12 – RUNWAY PHYSICAL CHARACTERISTICS

Designations RWY Number	True bearing	Dimensions of RWY (m)	Strength (PCN) and surface of RWY and stopway	THR co-ordinates RWY end co-ordinates THR Geoid undulation	THR elevation Highest elevation of TDZ of precision APP RWY
1	2	3	4	5	6
06	060.28°	† 939 x 30	Grass/Asphalt	*515444.03N 0004041.25E — GUND	THR 227 ft
24	240.29°	† 939 x 30	Grass/Asphalt	*515456.60N 0004116.54E — GUND	THR 223 ft
Slope of RWY/SWY	Stopway Dimensions (m)	Clearway Dimensions (m)	Strip Dimensions (m)	OFZ	
7	8	9	10	11	
12	Remarks:	Runway 06 threshold displaced by 89 m. † Runway has a 778 x 10 m Asphalt insert.		Runway 24 threshold displaced by 62 m.	

## EGSR AD 2.13 – DECLARED DISTANCES

Runway Designator	TORA (m)	TODA (m)	ASDA (m)	LDA (m)	Remarks
1	2	3	4	5	6
06	877	877	877	778	
24	840	840	840	778	

EGSR AD 2.14 – APPROACH AND RUNWAY LIGHTING								
Runway	Approach lighting Type Length Intensity	Threshold lighting Colour Wingbars	PAPI VASIS Angle Dist from THR (MEHT)	TDZ lighting Length	Runway Centre-line lighting Length Spacing Colour Intensity	Runway edge lighting Length Spacing Colour Intensity	Runway End lighting Colour Wingbars	Stopway lighting Length (m) Colour
1	2	3	4	5	6	7	8	9
24		Green wing bars LI	APAPI 3.5° LHS 62 m (30 ft)			White LI	Red	
10	<b>Remarks:</b>							

EGSR AD 2.17 – ATS AIRSPACE			
Designation and lateral limits		Vertical limits	Airspace Classification
1		2	3
<b>Earls Colne Aerodrome Traffic Zone (ATZ)</b> Circle radius 2 nm centred on longest notified runway (06/24) 515452N 0004057E.		2000 ft aal SFC	G †
4	<b>ATS unit callsign: Language:</b>	Earls Colne Radio. English.	
5	<b>Transition Altitude:</b>		
6	<b>Remarks:</b>	ATZ Hours: See AD 2.18. † Refer to Section ENR 1.4 for Notifications.	

EGSR AD 2.18 – ATS COMMUNICATION FACILITIES					
Service Designation	Callsign	Frequency MHz	Hours of Operation		Remarks
			Winter	Summer	
1	2	3	4		5
A/G	Earls Colne Radio	122.425	0900-SS	0800-1700	ATZ hours co-incident with A/G hours.

EGSR AD 2.20 – LOCAL TRAFFIC REGULATIONS
<p><b>1 Aerodrome Regulations</b></p> <ul style="list-style-type: none"> <li>a Pilots are to obtain a brief before departure inclusive of Noise abatement procedures currently in force.</li> <li>b All aircraft using this aerodrome and its facilities are required to have third party liability insurance cover in the sum of at least £1,000,000.</li> </ul> <p><b>4 Warnings</b></p> <ul style="list-style-type: none"> <li>a At the entry to the parking area, the distance between taxiway centre-line and parked aircraft is only 8 m. Visiting pilots should obtain a briefing on taxiway procedures and taxi with extreme caution.</li> <li>b Power lines cross Runway 06 approach. Pilots should not land before the displaced threshold.</li> <li>c Taxiway strip is not provided along the taxiway or in the apron area. Pilots should follow the yellow taxiway centre-lines where provided. Pilots should obtain a briefing on taxiway procedures and taxi with extreme caution.</li> <li>d The runway designators for both Runways 06 and 24 are not positioned in the centre of each runway. They are positioned in the centre of the grass section of each runway.</li> <li>e Pilots may experience windshear on either runway, particularly with a strong northerly wind.</li> </ul> <p><b>5 Helicopter Operations</b></p> <p>Helicopter pilots should follow preferred rotary arrival and departure procedures.</p>

**EGSR AD 2.21 – NOISE ABATEMENT PROCEDURES**

- a Noise abatement procedures in force on Runway 06/24.
- b Avoid overflying Earls Colne village.

**EGSR AD 2.22 – FLIGHT PROCEDURES**

Circuit directions: Runway 06 - RH; Runway 24 - LH.