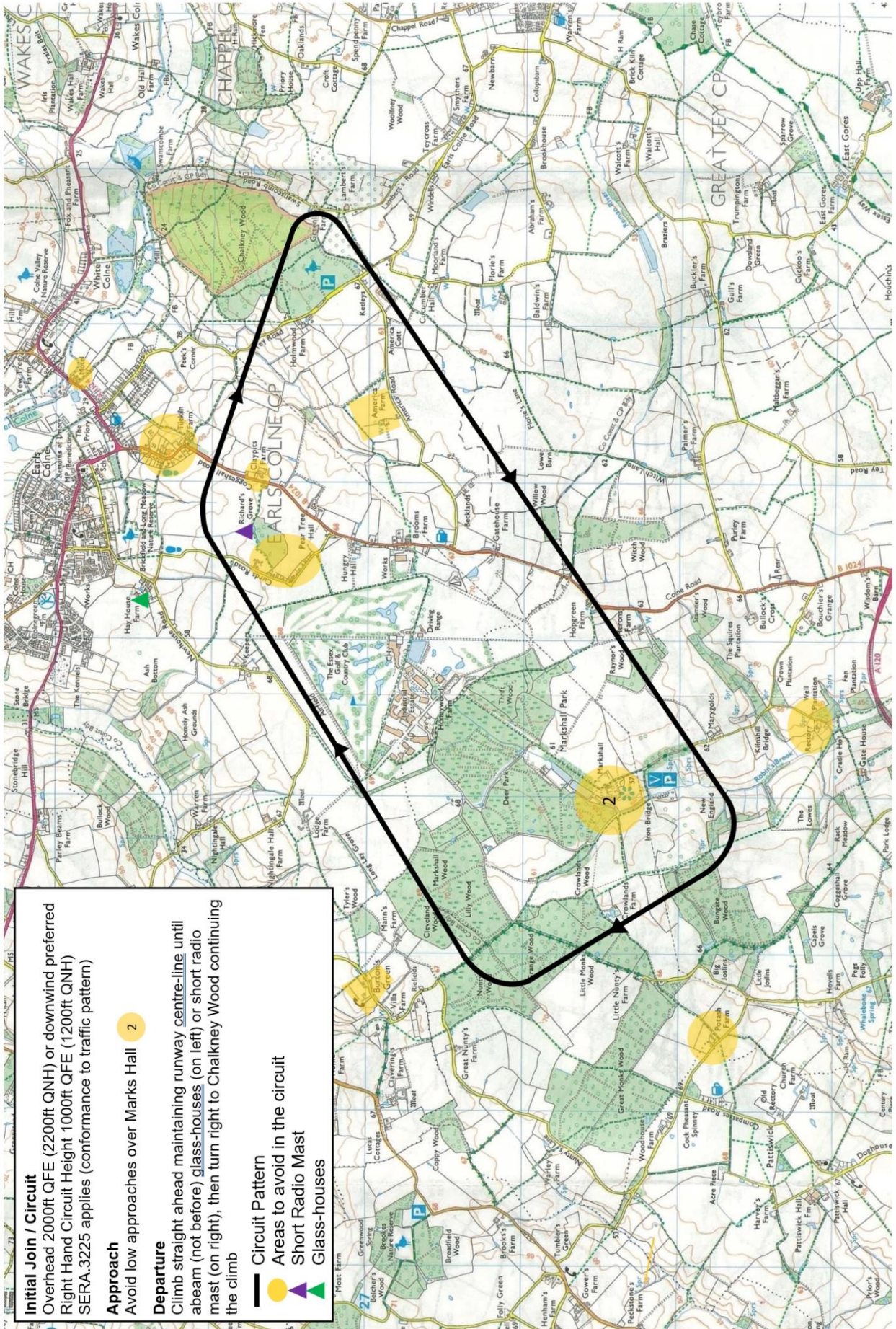


CIRCUIT PATTERN AND NOISE ABATEMENT RUNWAY 06


Initial Join / Circuit
 Overhead 2000ft QFE (2200ft QNH) or downwind preferred
 Right Hand Circuit Height 1000ft QFE (1200ft QNH)
 SERA.3225 applies (conformance to traffic pattern)

Approach
 Avoid low approaches over Marks Hall 2

Departure
 Climb straight ahead maintaining runway centre-line until
 abeam (not before) glass-houses (on left) or short radio
 mast (on right), then turn right to Chalkney Wood continuing
 the climb

Circuit Pattern

Areas to avoid in the circuit

Short Radio Mast

Glass-houses