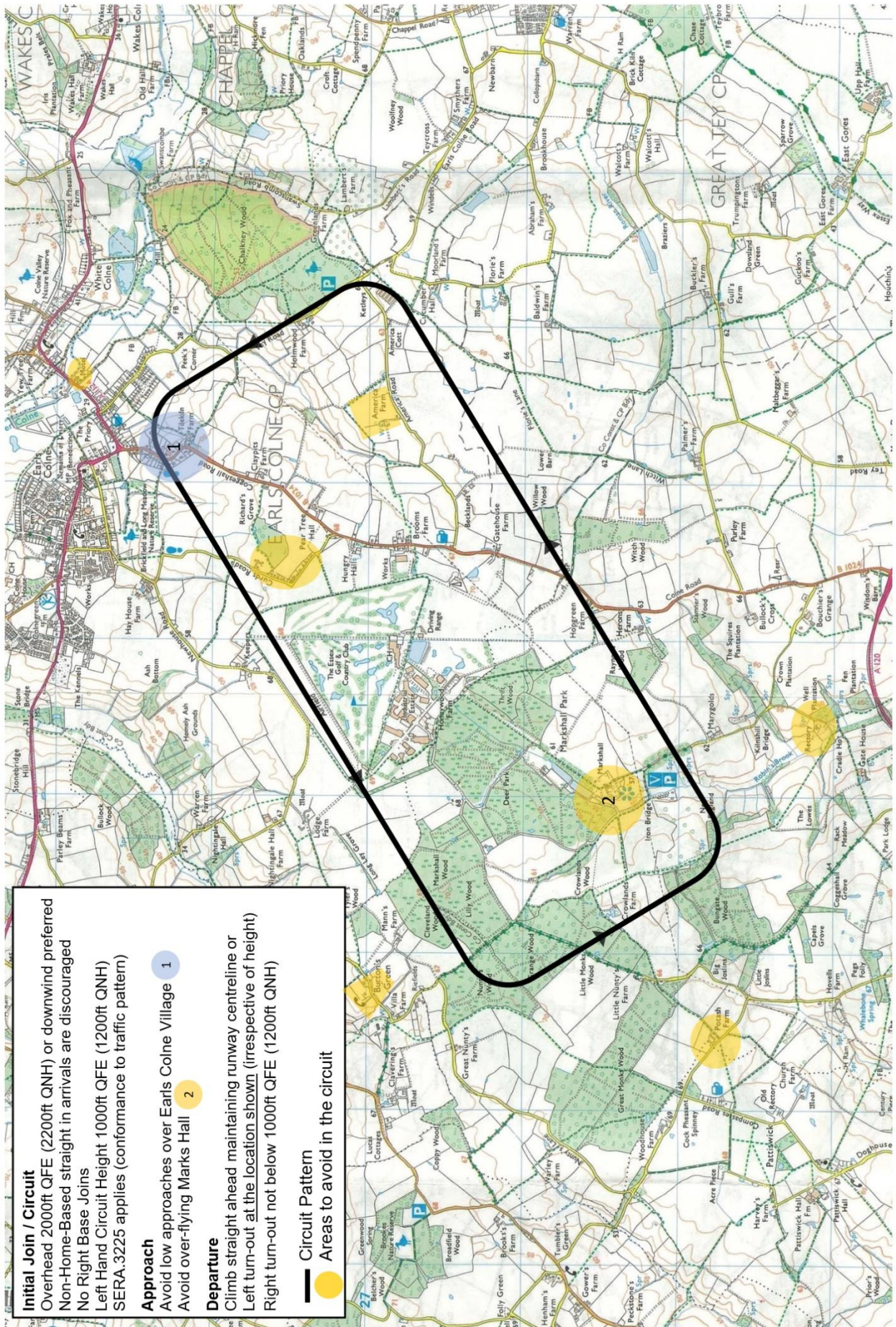




CIRCUIT PATTERN AND NOISE ABATEMENT RUNWAY 24



Initial Join / Circuit
 Overhead 2000ft QFE (2200ft QNH) or downwind preferred
 Non-Home-Based straight in arrivals are discouraged
 No Right Base Joins
 Left Hand Circuit Height 1000ft QFE (1200ft QNH)
 SERA.3225 applies (conformance to traffic pattern)

Approach
 Avoid low approaches over Earls Colne Village 1
 Avoid over-flying Marks Hall 2

Departure
 Climb straight ahead maintaining runway centreline or
 Left turn-out at the location shown (irrespective of height)
 Right turn-out not below 1000ft QFE (1200ft QNH)

Circuit Pattern
 — Circuit Pattern
 ● Areas to avoid in the circuit